



ACOUSTICS
by design

Fun, creative and simple. ReSorb Honey allows you to play with colour, configuration and texture to provide your environment with an acoustically effective sound absorbing wall or ceiling.

Easily fitted, create 3D relief with three thicknesses of tile and a core or textile finish for endless design combinations. Ideally suited to offices, conference rooms, breakout areas, halls and schools to improve reverberation (echo).

With its velour backing, the Honey tile is easily positioned and mounted to the wall with Velcro. Manufactured in ECOSUND® core material, available in four colours: white, black, grey and bronze brown Raw Edition with a smooth surface finish. Additionally there is the option to laminate the surface in a choice of colours from the Hush or Blazer textile range (the core colour edge will be visible).

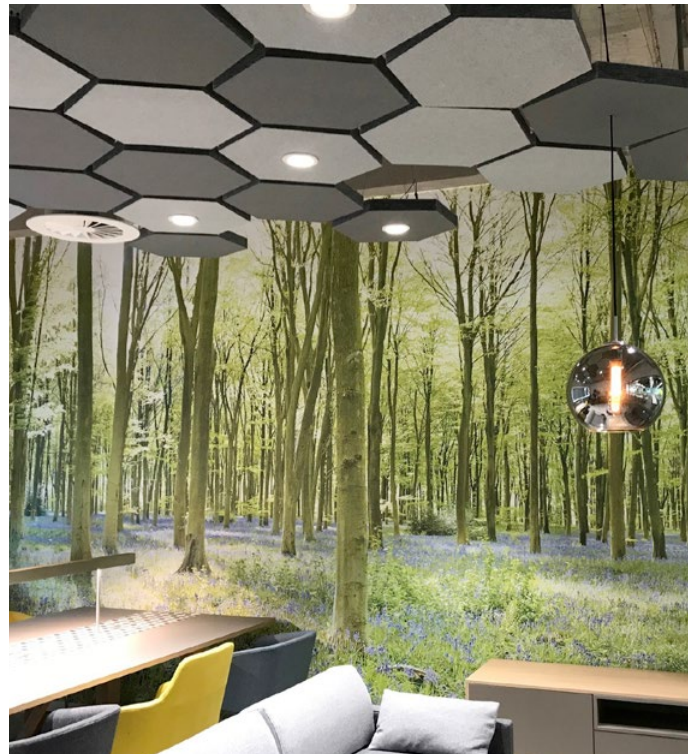
ReSorb

HONEY

CORE MATERIAL COLOURS



HUSH MATERIAL COLOURS



ReSorb

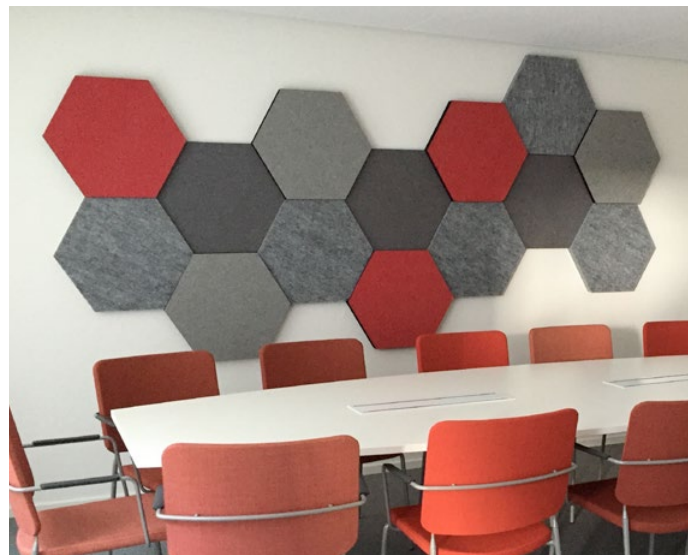
HONEY

SIZE OPTIONS - either core or fabric-faced:

- 600 x 520 x 20mm
- 600 x 520 x 40mm
- 600 x 520 x 50mm

The core material ECOSUND® is made from 50% recycled PET material- bottles and containers and 50% new PET fibres. It is manufactured responsibly without glue or adhesives to provide an anti-allergenic material (Oeko-Tex® Standard 100 approved). Environmentally responsible ECOSUND® is 100% recyclable.

ReSorb Honey core material ECOSUND® is a high-quality sound absorber. NRC rating class A- extremely absorbing. With standard fabrics Honey has been fire rated B-S1,D0. according to European Standard EN-13501-1



ABSORPTION DATA

